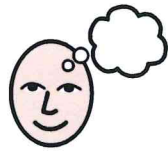




LA STREGA



PENSA

1

1

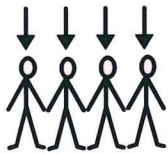


COLORE

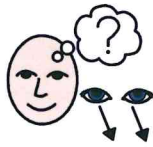
E LO



DICE



TUTTI

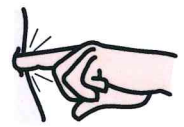


CERCANO



IL COLORE

E LO

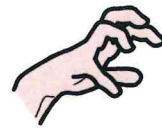


TOCCANO

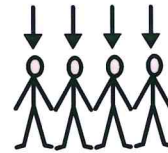


LA STREGA

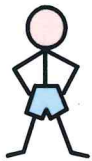
PROVA AD



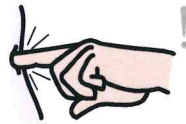
ACCHIAPPARE



TUTTI



SE IL BIMBO



TOCCA



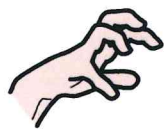
IL COLORE



LA STREGA



NON PUÒ



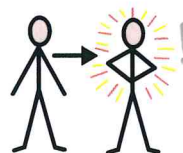
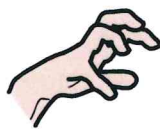
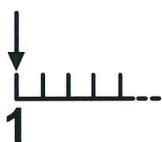
ACCHIAPPARE



SE IL BIMBO NON TOCCA IL COLORE LA STREGA PUÒ



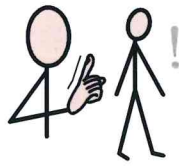
ACCHIAPPARE.



IL PRIMO BIMBO ACCHIAPPATO DIVENTA STREGA



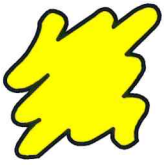
STREGA



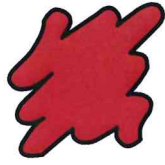
COMANDA



COLORE



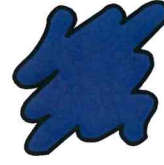
GIALLO



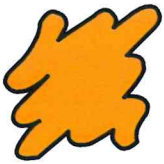
ROSSO



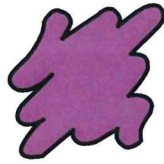
VERDE



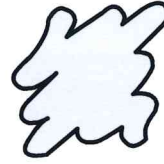
BLU



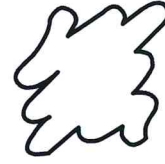
ARANCIONE



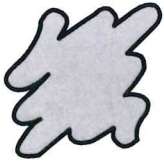
VIOLA



CELESTE



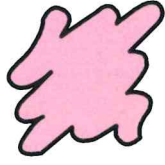
BIANCO



GRIGIO



NERO



ROSA